

## Celebrate the Season at the Chamber's Annual Meeting & Holiday Party

Network with hundreds of Chamber members & leaders at CCSNJ's Annual Meeting & Holiday Party, scheduled for *Thursday, December 10, 5:30 – 8:30 p.m.* at *The Mansion on Main Street*. Join us as we review our accomplishments for 2009, set goals for 2010, and elect Board members and officers at the *Annual Meeting*, starting at *5:30 p.m.* Then, relax and enjoy outstanding networking, fine hors d'oeuvres and a cash bar with hundreds of fellow Chamber members from *6:30 – 8:30 p.m.* at the *Holiday Party*, sponsored by *PSE&G, Archer & Greiner, Citizens Bank, Cooper University Hospital, and Marsh*. Don't miss one of the most well attended networking events of the year! Register online at [www.chambersnj.com](http://www.chambersnj.com). ✨

## DiLorenzo Named to Governor-Elect Christie's Transition Team

On November 11, Governor-Elect Christopher Christie announced a 10-person transition leadership team that includes CCSNJ President & CEO Debra P. DiLorenzo. Ms. DiLorenzo is honored to be the only person from South Jersey to be named to the transition panel.



CCSNJ President and CEO Debra P. DiLorenzo

The transition team will be headed up by Former Attorney General David Samson. Other members include: Senators Joseph Kyriillos and Sandra Bolden Cunningham, Ocean County GOP Chairman George Gilmore, Christie campaign strategist Michael DuHaime, Woodbridge Mayor and former State Treasurer John McCormac, Montclair State University President Susan Cole, former New Jersey Sports and Exposition Authority Chairman Jon Hanson, and former PSE&G President Alfred Koeppel.

Continued on page 4

## Inside

Government Action .....	2
From the President .....	3
Special Events .....	4
Membership.....	8
Business Resources .....	9
New Member .....	10
Member News.....	11
December Calendar .....	12

## Chamber Members Enjoy VIP Day with the Flyers



Flyers players (from left) Ilan LaPerriere, right wing; Ray Emery, goalie; and Ryan Parent, defenseman; meet members after the game.

Continued on page 6

## “Walk to Washington” with CCSNJ

Chamber members may register for an exclusive package through CCSNJ for the 73rd annual State Chamber “Walk to Washington,” set for *January 28 and 29, 2010*. Instead of the train, travel with us on a luxury chartered bus with door-to-door service from the Chamber’s office in Voorhees to the front door of the *Marriott Wardman Park Hotel* in Washington, D.C.

Enjoy the VIP treatment with one of the Chamber of Commerce Southern New Jersey’s special packages designed exclusively for our members. Package options include:

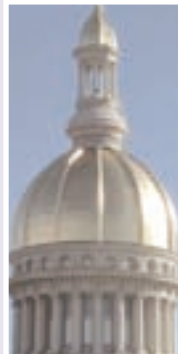
- ★ Entrance to our Chamber’s private, invitation-only VIP Hospitality Suite, sponsored by *Atlantic City Electric*, from 4:00 to 6:00 p.m. After the bus arrives, relax and network with fellow members and state and federal legislators from Southern New Jersey, while you enjoy delicious hors d’oeuvres and refreshments.
- ★ Round-trip transportation on a luxury-chartered bus to and from Chamber Headquarters in Voorhees with lunch and refreshments included.
- ★ Your hotel room, arranged for in advance (both check-in and check-out) by our Chamber. Pick up your room key at the Chamber’s VIP reception.
- ★ A ticket to the New Jersey State Chamber of Commerce reception and dinner honoring New Jersey’s Congressional Delegation.

Contact Blair at (856) 424-7776, ext. 120, or [bkindlick@chambersnj.com](mailto:bkindlick@chambersnj.com) for more information about our package options. ✨

## Meet Newly Elected Members Legislative Reception

Network with South Jersey’s State Legislators at our Annual Legislative Reception on *Tuesday, January 19, 5 – 7 p.m.*, at *The Mansion on Main Street* in Voorhees.

Join us for a great opportunity to meet fellow members and the legislators who represent you in Trenton. Premium hors d’oeuvres and cash bar will be available. Visit [chambersnj.com](http://chambersnj.com) to register. ✨



## Save the Date! Energy Symposium — January 22, 2010

The nation’s energy landscape is changing every day with new opportunities and technologies that will undoubtedly affect the future of energy in New Jersey. Please join us to hear from William Levis, President & COO of PSEG Power, who will discuss how nuclear energy could play a role in the state’s evolving energy culture, followed by a panel discussion on how nuclear and other alternative energy options could enhance the composition of New Jersey’s energy landscape. This program will be held at *The Mansion at Main Street*, from 8:00 – 10:30 a.m., and is sponsored by PSEG Power. ✨

## NJ Election Results



### Governor-Elect Christopher J. Christie

Republican Christopher J. Christie was elected Governor of New Jersey, defeating incumbent Governor Jon S. Corzine. Independent candidate Christopher Daggett, whose candidacy was a looming question mark as to the impact it would have on election results, received only six percent of the vote – far less than what some recent polling data predicted. Christie won handily in traditionally Republican leaning counties and also upset Corzine in some Democratic leaning territory, such as Gloucester County where Christie took home 47 percent of the vote in contrast to Corzine’s 44 percent. Christie is the first Republican to win statewide in 12 years.

Additionally, all 80 seats of the General Assembly were up for re-election.

Democrats were successful in holding onto the majority, losing only one seat to Republican Domenick DiCicco in District 4. Assemblyman-elect DiCicco was one of three candidates competing for current Democratic Assemblywoman Sandra Love’s seat, which she is vacating in January. Incumbent Assemblyman Paul Moriarty also won reelection in District 4. With DiCicco’s victory, the balance of power in the General Assembly will now shift to 47-33 at the start of the 214th Legislative Session in January.

Another South Jersey Assembly race that received a significant amount of attention

*Continued on page 3*



# From the President

## 2009 Annual Meeting & Holiday Party

At our Annual Meeting & Holiday Party on Thursday, December 10, the Chamber will welcome some new faces to our Board and say goodbye to a few friends. The Annual Meeting is an opportunity for us to take members through a journey of the previous year's accomplishments and future plans, and to recognize changes to our Board membership. The Chamber's Board plays a key role in shaping Chamber programs and policies. They set policy and approve legislative position statements, approve and monitor the annual budget, and plan and oversee the annual program of work. In addition, Board members are among our most active members, chairing committees and attending numerous events throughout the year.

On behalf of the Board, staff and membership I would like to thank retiring members of the Board for their support, expertise and contributions to the Chamber.

The Chamber will welcome a new class of members to the Board. These individuals will

represent a cross section of our membership and the South Jersey business community. They will provide leadership to the Chamber and represent you – our valued members.

I invite our members to attend our Annual Meeting to help us elect the new leaders of our Board for 2009. Immediately following the Annual Meeting, we will host our Holiday Party from 6:30 to 8:30 p.m. with premium hors d'oeuvres and a cash bar. Nearly 400 Chamber members attend the Holiday Party each year making it a great networking opportunity. You can also network with Chamber board members, welcome the newly appointed members of the board, and reinforce your business relationships.

I would like to personally thank all of the members of the board – past, present and future. Your vision, dedication and expertise are instrumental in all of the successes of the Chamber and allow the staff and I to best serve our members. I look forward to new and continued relationships with each of you. \*

“Welcome new faces and say goodbye to a few friends.”



## The Review

is published by

Chamber of Commerce  
**Southern New Jersey**

Piazza 6014 at Main Street  
Voorhees, NJ 08043-4659

**856.424.7776**

**856.424.8180 Fax**



### Chairman

Dr. Herman J. Saatkamp, Jr.

*President*

*The Richard Stockton  
College of New Jersey*



### President & CEO

Debra P. DiLorenzo



### Editor

Meredith Lorrilliere

## NJ Election Results

*Continued from page 2*

was in District 1, which encompasses Cape May County and parts of Cumberland and Atlantic Counties. After a heated race, Democrat incumbent Assemblymen Nelson Albano and Matthew Milam were successful in their bid for reelection, defeating Republican challengers Michael Donohue and John McCann.

In District 3, incumbent Assemblyman John Burzichelli and Assemblywoman Celeste Riley were victorious in the race against a strong Republican challenger, Dr. Robert Villare.

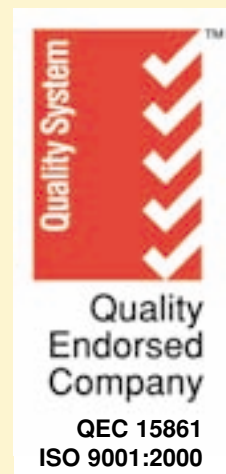
In the city of Camden, residents went to the

booth to select a new Mayor. Not surprisingly, Senator Dana Redd won by a large majority garnering 83 percent of the vote. Senator Redd has indicated she will relinquish her Senate seat, creating an opening.

In Atlantic City, incumbent Mayor Lorenzo Langford was reelected to serve another term.

In District 6, Senator James Beach won a special election for the Senate seat previously held by Congressman John Adler.

The Chamber looks forward to working with Governor-elect Christie, and all other newly-elected or reelected officials. Please see the next page for the full list of South Jersey Election results. \*



## Lessons of Leadership Strengthen Community



On Tuesday, December 15, the PNC Executive Series will feature a true leader – Jim Ellis, swim coach & founder of the Philadelphia Department of Recreation (PDR) Swim Team, and subject of the film, *Pride*.

The movie based on Jim Ellis' life, *Pride*, tells the story of how Ellis built a successful swimming program in one of Philly's most impoverished neighborhoods. Ellis founded the PDR Swim Team in 1971. Today, it is the city's nationally recognized competitive swim team, the nation's best predominately African-American team, and has become a model for urban swim programs around the country.

Jim Ellis' taught his P.D.R. swimmers more than just how to compete in the water; he taught them important life-changing lessons that would prepare them for better futures. Mr. Ellis will continue to inspire today's youth when his aquatic program moves to The Salvation Army Kroc Center slated to open in the fall of 2010 in North Philadelphia. The center will be the single largest investment in human services in the Philadelphia region in this generation.

Join us at 11:30 a.m. at the *Crowne Plaza*, Cherry Hill, to hear how the leadership of one man inspired so many, and how through the generosity of the business community and private donors Jim Ellis will continue to uplift the region's youth.

Register online at [www.chambersnj.com](http://www.chambersnj.com). \*

## Panelist Report on Economy at Business Outlook



Panelists reported on strengths and weaknesses of the regional economy to a crowd of nearly 300 businesspeople on October 21 during the Quarterly Business Outlook presented by Rutgers School of Business-Camden in partnership with the Chamber and Flaster/Greenberg P.C. Pictured from left: Richard J. Hoff, shareholder, Real Estate & Litigation Practice Groups, Flaster/Greenberg P.C.; Joel Naroff, president, Naroff Economic Advisors; John Kyees, chief financial officer, Urban Outfitters, Inc.; Rayman Solomon, acting executive dean, Rutgers School of Business - Camden; Debra DiLorenzo, president & CEO, Chamber of Commerce Southern New Jersey; Wendell Pritchett, chancellor, Rutgers University - Camden; Mario Turco, president, Philadelphia Tri-State Region, Verizon Wireless; and Stephen J. Hovnanian, principal, J.S. Hovnanian & Sons. The next Outlook is scheduled for January 26, 7:45 a.m., at the Crowne Plaza Cherry Hill. Visit [www.chambersnj.com](http://www.chambersnj.com) to register. \*

## Debra P. DiLorenzo Named to Transition Team

*Continued from page 1*

Ms. DiLorenzo looks forward to bringing the Chamber's 100 cost saving recommendations from its Board Council on Responsible Government Spending Reports to the Governorelect. She believes the recommendations outlined in these reports can help cut state spending and result in \$1 billion of savings to New Jersey.

Ms. DiLorenzo also said she would bring the concerns of the Atlantic City gaming industry to the Christie team, including its opposition to gambling elsewhere in the state. \*

More **Special Events** continued on page 5

## Health Care Reform: Fix or Fiasco?



On October 23, the Chamber hosted an On Point Program where a panel of experts provided their perspective on the most sweeping, controversial reform of our nation's health care system: (from left) Joseph H. Reichman, MD, president, Medical Society of New Jersey; Fred Hipp Jr., vice president, government relations, Virtua; Brian J. Litten, vice president, strategic & external affairs, AmeriHealth New Jersey; Governor James J. Florio, chairman, Partnership to Fight Chronic Disease – New Jersey; Geoffrey O'Hara, executive director, Eastern Region, U.S. Chamber of Commerce; and panel moderator Joe Dowd, vice president, Kistler Tiffany Benefits. ✨

## Assembly Budget Chairman Louis Greenwald



### Addresses State Affairs Committee

On Wednesday, October 21, the State Affairs Committee hosted District 6 Assemblyman Louis D. Greenwald. Assemblyman Greenwald, chairman of the powerful Assembly Budget Committee, discussed his insights on the recently passed FY 2010 State

Budget, next year's budget challenge, and other issues of interest to the South Jersey business community. This meeting was sponsored by Horizon Blue Cross Blue Shield of New Jersey, South Jersey Industries, Flaster/Greenberg P.C., and Verizon. ✨

## Environment Committee

### Tackles Recycling Issues



On Tuesday, October 27, the Environment Committee hosted Assemblywoman Pamela R. Lampitt and Guy Watson, chief, Bureau of Recycling and Planning, NJ Department of Environmental Protection, who spoke about local level and statewide recycling initiatives and the importance of business compliance with these regulations. This meeting was sponsored by Horizon Blue Cross Blue Shield of New Jersey, Manko, Gold, Katcher & Fox LLP, New Jersey American Water, and Atlantic City Electric. ✨



# VIP Day with the Flyers

## VIP Day with the Flyers

*Continued from page 1*

On Saturday, October 31, 130 Chamber members received the VIP treatment with a full day of activities with the Philadelphia Flyers.

Members enjoyed a buffet lunch and open bar in the Chamber's reserved box. They were visited by Flyers alumni Bob Kelly, Bernie Parent and Gary Dornhoefer during the Flyers game against the Carolina Hurricanes. Following the game, Flyers players headed up to the suite for a Meet & Greet with Chamber members.

We thank *Brandywine Realty Trust, GRT, TD Bank, and Virtua* for their continued support and sponsorship of this event, as well as the

Flyers organization for hosting our members. ✨



*Arron Asham, right wing for the Flyers, signs autographs.*



*(From left) Flyers Alumni Bob Kelly, Bernie Parent and Gary Dornhoefer (second from right) stopped by during the game to visit with members including Bob Segin, Virtua; Board member George Sowa, Brandywine Realty Trust; and CCSNJ Executive Vice President & COO Kathleen Davis.*



Dan Carcillo, left wing, signs a jersey for a fan.



Joe Feerar, TD Bank, and his guests enjoy the Flyers game.



Claude Giroux, right wing, and Ole-Kristian Tollefson, defenseman, at the Meet and Greet.

Let's Go,  
Flyers!



# Membership

## Chamber Members Help Federal Reserve Bank Determine SJ Business Conditions

On November 3, The Federal Reserve Bank of Philadelphia released the results of the Third Quarter 2009 South Jersey Business Survey. Firms in the South Jersey region reported declines in business growth during the third quarter, but the pace of declines moderated compared with earlier quarters. Employment trends, however, showed less dramatic improvement, with over one-third of the firms surveyed still reporting declines in employment in the third quarter. Although firms, on balance, expect improvement in business over the next six months, they also expect continuing employment losses.

To learn more about this quarterly South Jersey Business Survey, visit [http://www.chambersnj.com/about/about\\_partners.aspx](http://www.chambersnj.com/about/about_partners.aspx) and click Federal Reserve Bank of Philadelphia. ☀

## Network Connection Series

Sponsored by



December

3 ... Noon to 2:00 p.m. ... *Caffe Aldo Lamberti*, Cherry Hill

17 ... Noon to 2:00 p.m. ... *Braddock's*, Medford

Visit [www.chambersnj.com](http://www.chambersnj.com) for more information and registration. ☀

“ I *value* my **membership** in the *Chamber of Commerce Southern New Jersey*. It helps me stay **informed** on the **most relevant issues** affecting the New Jersey **business community** and provides ample *opportunities* to **network** with other professionals and to **share** what my organization has to **offer** to our community. ”

— **CAROL PAPROCKI**, SAMARITAN HOSPICE ☀

ADVERTORIAL

## Nutrition and Stress

AmeriHealth is a New Jersey-based health insurance company that is committed to keeping its members healthy by promoting wellness and tackling issues like stress management head-on. Unlike health threats that affect only some of us, we all have some degree of stress in our lives.

Many people don't fully understand the role food plays in both fueling and reinforcing stress. Most of us know that nutrient-poor, fat-heavy diets can lead to obesity and a host of undesirable disease conditions. However, food can also be a primary cause of stress. That stress, in turn, can compromise our ability to digest properly and absorb nutrients from even the healthiest of foods.

Not only do processed and fast foods contain empty calories, but they are like throwing gasoline on a fire in terms of stress. Caffeine, processed sugar and processed flour can unduly excite our nervous system, raise our blood pressure, make our muscles

tense – all of which promote stress. And then, of course, we often respond to that stress by eating even more unhealthy foods – it can be a vicious cycle unless you know how to get off of it!

Naturally, eating healthier – emphasizing fresh foods, fruits,

vegetables; avoiding caffeine and adhering to a balanced diet – is a terrific start. Other great ways to help minimize stress are things most of us already know, but don't always pay attention to, including: getting enough sleep, exercising regularly and planning ahead. For example, if you have to get your two

children to two different soccer fields by 6:00 pm, planning ahead can mean the difference between packing a healthy meal the night before or selecting the greasiest options from the drive-through.

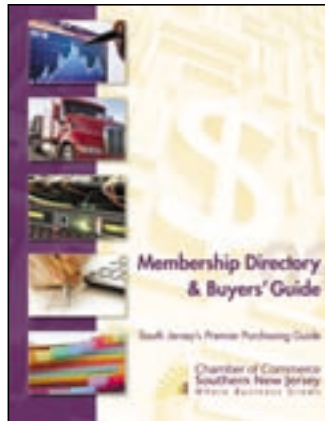
For more information on how AmeriHealth wellness programs help promote better health throughout New Jersey, contact Beth Sweeney: [beth.sweeney@amerihealth.com](mailto:beth.sweeney@amerihealth.com). ☀



**AmeriHealth**  
NEW JERSEY

## Advertise in the Chamber's 2010 Membership Directory

The Chamber's 2010 *Membership Directory & Buyers' Guide* is the ideal venue for business-to-business advertising, giving your company optimal exposure in the Southern New Jersey business community. CCSNJ's *Membership Directory* is used year-round by Chamber members when purchasing goods and services. It is consistently ranked by businesses as one of the top benefits of membership.



The 2009 CCSNJ Member Survey revealed that 75 percent of members have done business with other Chamber members within the last two years. The *Directory* is an important tool that promotes this member to member business. Advertising in the Chamber's *Membership Directory & Buyers Guide* will put your message on the desks of the top decision makers in the region where it will be used time and again.

The deadline to reserve your ad is Tuesday, December 22, 2009. Contact our publisher Jeff Morris, president of Morris Graphics, at (856) 845-4980 to reserve your space today! \*

### Reserve Your Space in *The Review* Today!

Consistently ranked by members as a top benefit of membership in the Chamber, *The Review* is widely read by Chamber members throughout the year. For as little as \$130 you can put your message in this award-winning monthly publication, which is mailed to 1,700 businesspeople and emailed to 3,700 businesspeople. Reserve your space today!

For more information contact Meredith Lorrilliere at [meredith@chambersnj.com](mailto:meredith@chambersnj.com) or 856.424.7776, ext. 118



## MAP Out Your Marketing Plan

### Reach Thousands Through the Chamber's Member Access Program

One of the most valuable benefits of Chamber membership is the ability to tap into the growing network of fellow Chamber members. The CCSNJ Member Access Program (MAP) is designed to make it easy for you to contact and do business with the Chamber's network of members. The MAP program provides you with information on all Chamber members in the following options:

#### MAILING LABEL PROGRAM

Members can order a set of pressure-sensitive mailing labels for main company representatives in zip-code order for \$125. Pressure-sensitive labels are also available for all company member representatives for \$175. Labels can also be purchased in customized order (by county, number of employees, business classification, etc.) at ten cents per record.



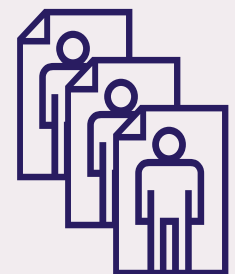
#### DATABASE PROGRAM

Members pay a one-time enrollment fee of \$250 for the database program. This one-time fee includes a database that may be used for one year and allows your company to purchase updated databases for \$75 for the life of the program. The database contains pertinent information – company name, main contact, address, and phone number – about Chamber member companies.



#### Get your message out to

**thousands** of fellow Chamber members. Call Carol Revak at (856) 424-7776 extension 122 or visit [www.chambersnj.com](http://www.chambersnj.com) for more information or to purchase these valuable marketing tools. \*



# New Members

## ADVERTISING SPECIALTIES

**Jersey Outdoor Media**  
[www.jerseyoutdoor.com](http://www.jerseyoutdoor.com)  
Moorestown, NJ

Outdoor advertising, billboard advertising, sales management, leasing and development.

## ARCHITECTS

**Meyer Design**  
[www.meyerassociates.com](http://www.meyerassociates.com)  
Ardmore, PA

Meyer Design, Inc. is an interior design and architecture firm comprised of over 50 interior designers, architects, furniture and relocation specialists, and administrative staff.

## BANKS

**Haddon Savings Bank**  
[www.haddonsavings.com](http://www.haddonsavings.com)  
Haddon Heights, NJ  
Haddon Savings is a community bank catering to individual customers. We offer mortgage and home equity loans, checking and savings accounts.

## CONSULTANTS-ENGINEERS

**T & M Associates**  
[www.tandmassociates.com](http://www.tandmassociates.com)  
Moorestown, NJ  
We are one of the most diverse and fastest growing engineering, planning and environmental consulting firms in the Northeast.

## CONTRACTORS-GENERAL

**Russ Kelly Inc.**  
[www.russkellyinc.com](http://www.russkellyinc.com)  
Mount Laurel, NJ  
General contractor who specializes in retail, restaurant & any fit-out construction.

## DISASTER RECOVERY SERVICES

**Air Technology Solutions, Inc.**  
[www.atlabs.net](http://www.atlabs.net)  
Burlington, NJ  
Environmental service company

focusing on indoor air quality. Air testing and purification. Disaster recovery services - fire/water/mold/smoke damage.

## ENGINEERS-CIVIL

**Duffy Dolcy McManus & Roesch**  
[www.duffydolcymcmanusandroesch.com](http://www.duffydolcymcmanusandroesch.com)  
Galloway, NJ

Duffy Dolcy McManus and Roesch is a full-service civil engineering firm that has been representing clients throughout N.J. since 1979.

## FINANCIAL SERVICES

**Champion Financial & Tax Services, LLC**  
Mickleton, NJ  
Professional money management, financial and tax services, insurance.

## GIFTS & GIFT BASKETS

**LoveThoseGiftBaskets.com**  
[www.welovethosegiftbaskets.com](http://www.welovethosegiftbaskets.com)  
Deptford, NJ  
A lasting impression in minutes.

## HUMAN RESOURCES

**Career Concepts**  
[www.cciconsulting.com](http://www.cciconsulting.com)  
Marlton, NJ  
Career Management and Human Resource consulting firm.

## LAW FIRM

**Mullen and Reagan**  
[www.mullenandreagan.com](http://www.mullenandreagan.com)  
Cherry Hill, NJ

## MAILING, SHIPPING, FOLDING & INSERTING

**Alpha Graphics**  
[www.cherryhill.alphagraphics.com](http://www.cherryhill.alphagraphics.com)  
Cherry Hill, NJ  
Printing, copying and mailing services center. Online ordering services. ISO 900 certified. Friendly, professional staff with experienced designers.

## MARKETING

**Host Connections International**  
[www.myhostconnect.com](http://www.myhostconnect.com)  
Mays Landing, NJ

## NON-PROFIT ORGANIZATION

**YMCA of Burlington County**  
[www.ymca-bc.org](http://www.ymca-bc.org)  
Mount Laurel, NJ

## PARKING LOTS

**Expert Parking**  
[www.expertparking.net](http://www.expertparking.net)  
Philadelphia, PA  
We are a certified women-owned boutique parking management company that delivers a level of service and value unsurpassed in the industry to our clients, owners, developers and especially to the patrons utilizing our parking facilities.

## PUBLICATIONS

**AL DIA News — The Voice of Latinos**  
Philadelphia, PA  
AL DIA is the only circulation - audited newspaper in the Hispanic market. We are considered the voice of Southern PA, SNJ & Northern DE region.

## RETAIL STORES

**Bachmann Trains**  
[www.bachmanntrains.com](http://www.bachmanntrains.com)  
Philadelphia, PA  
Bachmann Trains has everything to satisfy your model railroading needs. From the beginner to the serious enthusiast. Bachmann has it all in every scale.

## TELECOMMUNICATIONS

**Clear**  
[www.clearwire.com](http://www.clearwire.com)  
Plymouth Meeting, PA \*



*Are your client and prospect lists up-to-date?*

41 million residents and 2.3 million businesses change their address every year!

Call Morris Graphics to see how we can help you update your lists today!

- Short Run Digital Black & White and Color Printing
- Longer Run Offset Printing
- Bindery Services
- Mailing Lists Business to Business & Residential
- Direct Mail Preparation
- USPS Certified

**Morris GRAPHICS INC.**  
Printing and Direct Mail

p: (856) 845-4980  
f: (856) 853-5787  
sales@morrisgraphics.com  
www.morrisgraphics.com

660 N Broad St. • Woodbury, NJ 08096-1708



# Member News

## ANNOUNCEMENTS

- Rita Manno of Manno Public Relations was chosen to become a community editorial board member at the Courier-Post in Cherry Hill. She will comment on questions posed by editors on policies, issues, candidates and stories featured in the paper.
- Deborah Heart and Lung Center's 4 Lesser inpatient wing for surgical cases was recently recognized as one of the top nursing units in the country with a 99th percentile rating for patient satisfaction from HCAHPS (Hospital Consumer Assessment of Healthcare Providers and Systems) a federal database that compiles hospital statistics.
- Continental Airlines has entered into bilateral commercial agreements with all of the existing 24 Star Alliance members. These agreements define the business relationships underpinning the Star Alliance brand and

services, including reciprocal earning and redemption of frequent flyer miles. In addition, Continental has signed code-sharing agreements with four Star Alliance members – United, Lufthansa, Air Canada and bmi.

- Advocare announced plans for a new office in Mansfield Township. Advocare Mansfield Pediatric & Adolescent Medicine, just North of Columbus on Route 206, will be serviced by the doctors and staff of Advocare Medford Pediatric & Adolescent Medicine, and will continue to offer patients an accessible office with easy, same day availability for appointments.

## APPOINTMENTS

- Intelysis Corp. announced the new hire of Christopher Luke as Digital Forensic Examiner. In this capacity Luke is part of the firm's U.S. digital forensics team responsible for analyzing and producing electronic evidence

in corporate fraud cases via forensic acquisition of data from computers, servers and other electronic equipment.

- Attorney Anthony R. La Ratta has been appointed to the Alumni Advisory Board of the Communication Department of LaSalle University in Philadelphia to help the department prepare students for a rapidly evolving communications environment.

## AWARDS

- Social worker Sherri Brake, LSW received Samaritan Hospice's quarterly employee Dove Award for Service Excellence.
- Taylor Wiseman & Taylor (TWT) is pleased to announce that Garden State Park Project in Cherry Hill, NJ, was awarded first place from the Mid Atlantic Real Estate Journal in the Retail Design Competition.
- Virtua has been recognized by the National Research

Corporation (NRC) as one of the nation's top hospitals. The Consumer Choice Award showcases hospitals chosen by healthcare consumers for having the highest quality and best image in more than 300 markets throughout the United States. Virtua is one of the select few in the Delaware Valley to receive the 2009/2010 Consumer Choice Award.

- Deborah Heart and Lung Center's Vascular Labs were recently reaccredited for three years by the Intersocietal Commission for the Accreditation of Vascular Laboratories.
- Atlantic City Electric has been named a recipient of the U.S. Department of Energy Smart Grid Investment Grant Award. The \$18.7 million in federal stimulus matching grants will be used to modernize the electric distribution system in southern New Jersey and help customers control their energy use a peak times. ✨

Tap into the Power of the Chamber's

## MEMBER BENEFITS CENTER

Save **money, time, and hassles** on a wide range of insurance products and discounts for your business and your employees.

- |                      |                          |                        |
|----------------------|--------------------------|------------------------|
| • Health             | • Voluntary Benefits     | • Workers Compensation |
| • Life               | • ID TheftSmart™         | • Umbrella             |
| • Dental             | • Professional Liability | • Crime                |
| • Vision             | • Auto/Home              | • Bonding              |
| • Prescription Plans | • Commercial Auto        | • Builders Risk        |
| • Disability         | • General Liability      | • Pet Insurance        |

Plus, discounts at the online mall **MyRewardZ.com**

For more information on these products, please visit [www.chambersnj.com/membership/insurance.aspx](http://www.chambersnj.com/membership/insurance.aspx)





# December Calendar of Events

\* Indicates Meeting held at Chamber Headquarters

Monday	Tuesday	Wednesday	Thursday	Friday
For more information about <i>upcoming events</i> visit <a href="http://www.chambersnj.com">www.chambersnj.com</a>	Environment Committee Meeting: 8:30 a.m., The Mansion on Main Street, Voorhees		Network Connection Lunch: Noon, Caffe Aldo Lamberti, Cherry Hill	
7	8		Annual Meeting & Holiday Party: 5:30 p.m., The Mansion on Main Street, Voorhees	11
14	PNC Executive Series: 11:30 a.m., Crowne Plaza, Cherry Hill	Health Issues Committee Meeting: 8:30 a.m., The Mansion on Main Street, Voorhees	Network Connection Lunch: Noon, Braddock's, Medford	18
21	22	23	24	25
28	29	30	31	Happy Holidays from CCSNJ!

Save the Date:  
 73rd Annual State Chamber  
 WALK to WASHINGTON  
 January 28 - 29, 2009

856/424-7776 • [www.chambersnj.com](http://www.chambersnj.com)  
 Piazza 6014 at Main Street  
 Voorhees, NJ 08043-4659



Chamber of Commerce  
 Where Business Grows



PRSR STD  
 U.S. POSTAGE  
 PAID  
 BELLMAWR, NJ  
 PERMIT NO. 247